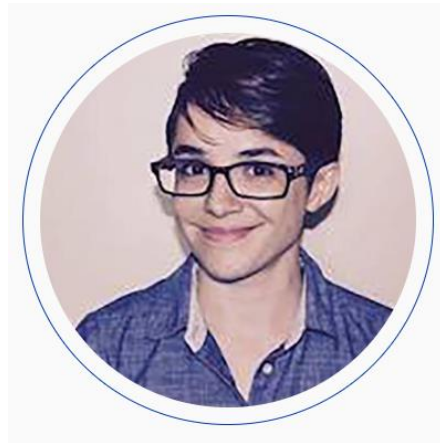


Fernanda Sobrino



I am an Assistant Professor at the Tecnológico de Monterrey School of Government. My research focuses on development, crime, and natural language processing. My recent work includes - criminal mapping organizations across Mexican and Colombian municipalities - the effects of the opioid crisis in competition between drug cartels in Mexico - the relationship between market structure and violence in drug markets - following political violence towards candidates in Mexico - measuring which information helps more migrants crossing through Mexico reduce dangers.

Education

Ph.D. Candidate in Economics 2020 Princeton University

M.A. Economics 2018 Princeton University

B.A. Economics 2014 Instituto Tecnológico Autónomo de México (ITAM) graduated with highest honors

B.A. Applied Mathematics 2014 Instituto Tecnológico Autónomo de México (ITAM) graduated with highest honors

Skills

Computational: R, Python, Matlab, QGIS

Languages

Spanish (Native), English, French (fluent), Italian, Catalan (intermediate)

Interests

- Data Science
- Economics of Crime
- Development

Data Projects

Mapping Criminal Organizations

Research in progress

[Mexican Cartel Wars: Fighting for the U.S Opioid Market \(JMP\)](#)
[PDF](#)

[The Mexican Connection](#)
[Drug Cartel Entry and Expansion](#)

Teaching

Princeton University - Teaching Assistant

- [Economics of the Internet: The Digital Revolution](#), Prof. Swati Bhatt, Fall 2016-2019
- [Firm Competition and Strategy: A Mathematical Approach](#), Prof. Kate Ho, Spring 2019
- [Economics of Health and Health Care](#), Prof. Maria Rosales, Spring 2017
- [Economic Analysis of Development](#), Prof. Jeffrey Hammer, Spring 2017
- Instituto Tecnológico Autónomo de México (ITAM) -Lecturer
- [Monetary Policy](#), Summer 2015

ITAM

- Monetary Policy (Instructor) 2015
- Advanced Macroeconomics, Professor Felipe Meza 2012
- Game Theory, Professor Cesar Martinelli 2011

Honors and Awards

- Princeton University Graduate Fellowship 2014-2019
- International Economics Section Research Support 2016
- Highest GPA in B.A. in Economics, ITAM 2013
- Highest GPA in B.A in Applied Math, ITAM 2013
- Partial Scholarship ITAM, best entry exam 2009-2013

Other activities

Captain of the Princeton Tae Kwon Do team 2017-2019

Tutor in the JSI of the Woodrow Wilson School, Princeton U 2017-2019

Center for the Mexican Ice Hockey National Team 2012-2014